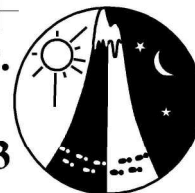


Western Australian Rogaining Association Inc.

Ronan's Romp 6 Hour Rogaine. 15 March 2003



This map was produced using OCAD. Data supplied by DOLA and used under licence 393/93.

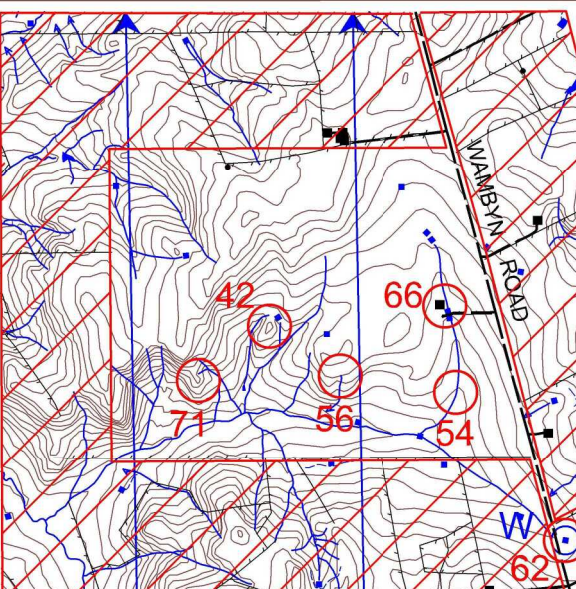
Setters

Roy Hiller
Jim Walter
Jim Langford

Vetters

Colette Sims
John Cresp
Keith Stewart

Possession of this Map does not give right of entry to this Area.

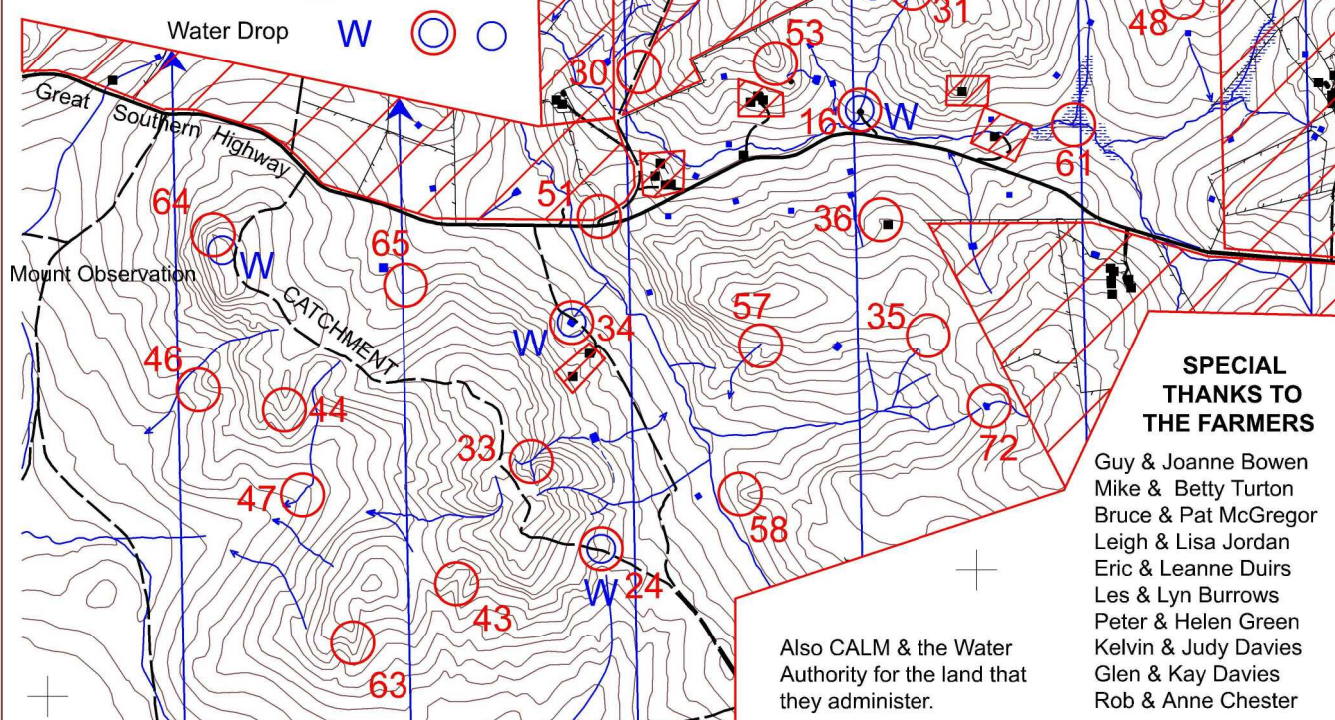


LEGEND

SCALE 1:50,000, 5 metre contour interval



Building	■
Continuations	→ → → →
Control	○ 72
Contours	⌒ ⌒ ⌒
Dam	■ ■
Fence	— — — —
Start / Finish	△
Magnetic North Line	↑
Out of Bounds	▨
Road, Sealed	— — — —
Road, Major Gravel	— — — —
Track	— — — —
Watercourse	— — — —
Water Drop	W ○ ○



SPECIAL THANKS TO THE FARMERS

Guy & Joanne Bowen
Mike & Betty Turton
Bruce & Pat McGregor
Leigh & Lisa Jordan
Eric & Leanne Duirs
Les & Lyn Burrows
Peter & Helen Green
Kelvin & Judy Davies
Glen & Kay Davies
Rob & Anne Chester

Also CALM & the Water Authority for the land that they administer.

Ronan's Romp 6 Hour Rogaine - 15 March 2003

No.	Description	Points
13	A rock surface, on a fence	10
14	A Trig point (Mount Ronan)	10
15	The dam, north side	10
16	The pool (St. Ronan's Well), 30m @ 310 degrees	10

20	The dam, north side	20
21	The dam, south east corner	20
22	The dam, on a windmill	20
23	The water tank	20
24	A fence junction	20

30	A knoll, rocky, west side	30
31	The watercourse, head of	30
32	The dam, 50m @ 180 degrees	30
33	The creek junction	30
34	The dam, on a windmill	30
35	The gully	30
36	The spur	30

40	A fence, surrounding a tree grove, west side	40
41	The watercourse	40
42	The summit	40
43	A creek junction	40
44	The spur	40
45	The summit	40

Water Drops :-

- 62 On Wambyn road
- 15 On Boyercutty road
- 16 At St. Ronan's Well (just off Great Southern Hwy)
- 64 150m @ 140 degrees from control
- 34 On farm track
- 24 On Catchment road

No.	Description	Points
46	The spur, bottom of	40
47	The watercourse (Caution - deep)	40
48	The gully, west side	40

50	A rocky knoll, east side	50
51	A fence corner	50
52	The dam, north side	50
53	The spur, rocky	50
54	A fence junction	50
55	The dam, south west corner	50
56	The watercourse, head of	50
57	The gully, head of	50
58	The spur	50
59	The knoll, south west end	50

61	The creek junction	60
62	The dam, north west corner	60
63	The spur	60
64	The spur	60
65	A fence gully crossing	60
66	The shed, east side	60

70	The central watercourse, head of	70
71	A knoll, rocky	70
72	The dam, north side	70

Important Information	
Map Issue	From 12:00 Sat
Novice Briefing	13:30 Sat
Control Cards	From 14:30 Sat
Briefing	14:50 Sat
Start	15:00 Sat
Finish warnings	20:50 and 20:55
Finish	21:00 Sat
Astronomical	Sunset 18:35 Moonrise 16:51
Controls Used = 44	
Total Points = 1780	
Hash House	None

Road Patrol : Great Southern Hwy, Catchment Road, Wambyn Road, Boyercutty Road.

Safety bearing : go to a patrolled road. Wait at a water drop if you need assistance.

Out-of-bounds : All houses and most farm sheds, marked farmland and the flora and fauna reserve south of the Start / Finish area.

Fences : Most are mapped, but some may not exist and there can be extra ones.

Do not expect to see water in creeks or watercourses. Rock features are not mapped.

The area south of Great Southern Hwy and west of Catchment road is mainly bush.